

Cruising Lake Tahoe with Action Water Sports of Incline Village, Nevada, USA



A beautiful blue-sky summer day cruising on pristine [Lake Tahoe](#) with [Action Water Sports of Incline Village \(AWSIncline\)](#) located in [Incline Village, Nevada](#) on their **55-foot catamaran, Sierra Cloud**, was the perfect adventure for the **"Adventure Kids™" aka Debra C. Argen and Edward F. Nesta**. For two glorious hours we soaked up the stunning scenery of the snow-capped mountains, the lake, and the lushness of the coastline.



Adventure Kids on

Action Water Sports of Incline

During our stay at the [Atlantis Casino Resort Spa](#) in Reno, Nevada, we wanted to experience the area's water activities, and on Sunday, July 28, 2019, we drove to Incline Village for an afternoon of cruising Lake Tahoe with Action Water Sports of Incline Village. Located less than a 1-hour drive from Reno, the drive was breathtakingly beautiful as the highway winded its way up to Mt. Rose Ski Tahoe, the closest ski resort to Reno, with a base elevation of around 8,200 feet, then making its descent towards Incline Village with an elevation of 6,350 feet. Along the way there were scenic lookout points and we stopped at many of them to gaze at the mountains, some of which still had a bit of snow at their peaks, even in late July, as well as admire the stunning views of Lake Tahoe.



Measuring the height of snowfall in mountains to Lake Tahoe

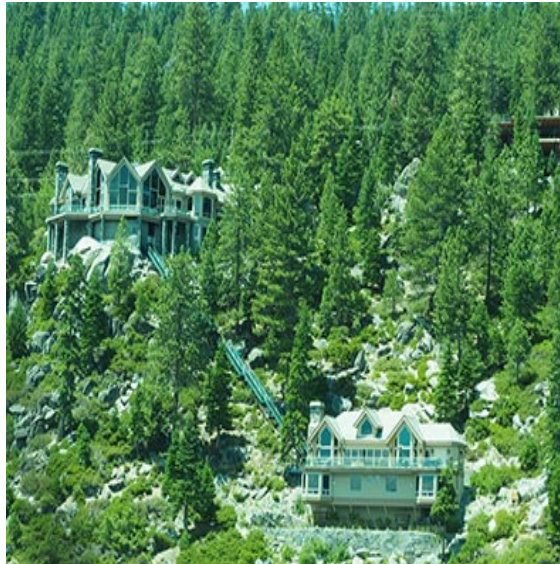
Located in the Sierra Nevada mountain range, Lake Tahoe sits at an elevation of 6,225 feet, and has the distinction of being located partly in California and partly in Nevada, with California owning the greater share of the freshwater lake. It measures 22 miles long, is 12 miles wide, and has an average depth of 1,000 feet/300 meters and a maximum depth of 1,644 feet/501 meters. Lake Tahoe is the second deepest lake in the United States, (Crater Lake in Oregon is deeper with a depth of 1,949 feet/594 meters), and it is the 16th deepest lake in the world.



Glider Plane

As would befit such a deep body of water, where its sheer depth has prohibited extensive exploration, Lake Tahoe is shrouded in mystery and legend as to what lurks at the bottom of the lake. Since the mid-1800s, there have been people who have claimed to have seen a large creature or monster breaking the surface of the lake, which they have playfully named, "Tessie."

Created by: Debra C. Argen and Edward F. Nesta



Spectacular homes lining the Lake Tahoe Shore

During our 2-hour cruise, there were not any sightings of "Tessie" although we did see spectacular multi-million-dollar homes dotting the coastline, a glider plane, a parasailing boat, kayakers, boaters, jet skiers, and people on SUPs, all out enjoying the beauty of a perfect summer afternoon on the lake.



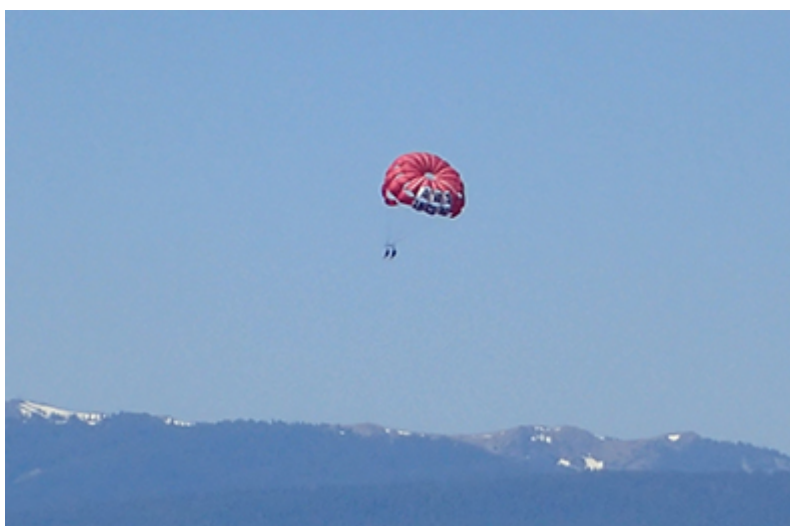
Captain Rusty

Rusty, the personable and knowledgeable AWS Incline captain provided an interesting narrative during the cruise pointing out several highlights as well as fun facts and amusing legends, while the attentive and professional crew brought around a selection of complimentary beverages of wine, beer, soda, juice, or water, as well as light snacks of fresh fruit and berries, and a selection of cheese and crackers.



Snow covered mountains

As the Sierra Cloud made its way back to shore, we took one last look around to imprint an amazing day on the water in our memories, one that will linger for many months especially when the weather turns colder and a day spent out on the lake will be only a beautiful memory.



Parasailing

AWS Incline is in North Lake Tahoe directly across from the Hyatt Regency at Incline and is 22 miles from Reno. Daily cruises depart at 12:00 pm, 2:30 pm, and 5:00 pm. All sailing cruises include assorted beverages and light hors d'oeuvres.

Created by: Debra C. Argen and Edward F. Nesta



Come Aboard the Sierra Cloud

In addition to the Sierra Cloud Catamaran, they also have Boat and Jet Ski Rentals, Lake Tahoe Parasailing, SUPs, and Formula Yacht Charters.



Action Water Sports of Incline Village (AWS Incline)

995 Lakeshore Blvd.

Incline Village, Nevada 89451

United States

Telephone: +1-775-831-4386

Website: www.awsincline.com

Facebook: <https://www.facebook.com/awsincline/>

Twitter: @awsincline

Instagram: @awsincline

Read more about the **Atlantis Casino Resort Spa** in the [Hotels and Resorts](#), [Restaurants](#), [Chefs' Recipes](#), and [Spas](#) sections.

Read more about **Reno and Tahoe** in the [Destinations](#), [Arts](#), [Adventures](#), and [Performances](#) sections.



CHEERS!

See You at Lake Tahoe

Important Travel Information:

When is the best time to visit Reno and Tahoe? Anytime! There is always something exciting happening throughout the year! From special events and festivals or just taking it easy, the area offers a rich diversity of possibilities.

A Few Festival Ideas for Inspiration - Month-By-Month

January

Reno Latin Dance Fest

February

SnowFest!

March

Rocky Mountain Oyster Fry

April

Reno Jazz Festival

May

Reno River Festival

June

Reno Rodeo

July

Artown

July - August

Lake Tahoe Shakespeare Festival

August

Hot August Nights

September

The Great Reno Balloon Race

October

Lake Tahoe Marathon

November

Reno Pop Culture Con

December

Northern Lights Festival

Need more inspiration to plan your trip to **Reno, Nevada**, visit the **website**:

<https://www.visitrenotahoe.com/plan-your-trip/special-events/>

Flight Information

Reno, Neva is accessible with non-stop flights from many US cities making it an easy destination for visitors.

Direct Flights to Reno from:

Airport

Airport Code

Boise

BOI

Chicago

MDW/ORD

Dallas

Dal/DFW

Denver

DEN

Houston

HOU

Las Vegas

LAS

Los Angeles

LAX

Minneapolis

MSP

New York

JFK/LGA/EWR

Phoenix

PHX

Portland

PDX/PWN

Salt Lake City

SLC

San Diego

SAN

San Francisco

SFO

San Jose

SJC

Seattle

SEA

For more information on direct flights to Reno, please visit the website:

<https://www.atlantiscasino.com/activities/direct-flights-to-reno/>

For more information on the Reno and Lake Tahoe area please visit the website:

www.VisitRenoTahoe.com

Follow **AWS Incline** on **Facebook** at www.Facebook.com/awsincline/

Follow **Visit Reno Tahoe** on **Facebook** at www.Facebook.com/renotahoe

Follow **Luxury Experience** on **Facebook** at www.Facebook.com/LuxuryExperience to see photos and videos.

Follow **Luxury Experience** on **Twitter** at <https://www.twitter.com/luxurypair> @luxurypair

Luxury Experience <http://luxuryexperience.com/>

Created by: Debra C. Argen and Edward F. Nesta

Follow **Luxury Experience** on **Instagram** at <https://www.instagram.com/luxurypair>@luxurypair

© August 2019. **Luxury Experience**. www.LuxuryExperience.com. All rights reserved.