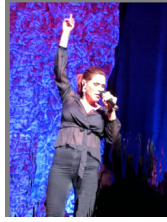


Beth Hart and Rachael Sage at The Ridgefield Playhouse, Ridgefield, CT, USA



Grammy-nominated Blues Rocker singer, songwriter, musician [Beth Hart](#) rocked the house at [The Ridgefield Playhouse](#) in **Ridgefield, Connecticut**, together with the talented **singer, songwriter, musician [Rachael Sage](#)** as part of their **U.S. Tour**, (February and March 2017), which brought the audience to its feet where they remained for most of the evening.

The multi-talented New York based Pop Rock singer, songwriter, musician [Rachael Sage](#), joined by guitarist **James Mastro**, opened the Tuesday, February 22, 2017 concert at The Ridgefield Playhouse playing cuts off her latest release, **Choreographic**, released in 2016 on her Indy label, [MPress Records](#). With 12 albums under her belt, Rachael Sage is a standout performer and a four-time independent Music Award winner. As a bit of background, in addition to being a singer, songwriter, and composer whose works have also appeared on television shows, Rachael is also an artist, graphic designer, dancer, choreographer, and plays a host of instruments including piano, acoustic guitar, electric guitar, Wurlitzer, and Mellotron. To say that she is talented would be an understatement.



Rachael Sage

on stage at The Ridgefield Playhouse

Rachael has a sparkling voice made for Pop Rock and a few of the many great songs she performed off *Choreographic* included: *Heaven (Is A Grocery Clerk)*, a catchy song with Rachael on keyboards, *Try, Try, Try*, which hit the number 6 position on the AC Top 40 Radio Chart, with Rachael switching to guitar, and *I Don't Believe It*. After her performance, she did a "meet and greet" in the lobby to continue the magic of the evening for her fans.



Debra C. Argen and Rachael Sage

When [Beth Hart](#) took to the stage, it was apparent that she had many longtime fans in the audience as she received a standing ovation, which would continue throughout the evening whenever she played an audience favorite.



Beth Hart

on stage at The Ridgefield Playhouse

It was a night of new music, as well as old favorites, which included the song, *Isolation*, off her debut album, *Immortal*, released in 1996, and the song, *Get Your Shit Together*, off her second album, *Screamin' For My Supper*, released in 1999.

Beth, together with her band, **Jon Nicholson** guitar, **Bob Marinellion** bass, and **Bill Ransom** drums, delivered the goods in an intimate setting where her powerful voice soared and her hard-hitting lyrics made a forceful impact.



Jon Nichols

Nominated in 2014 for a Grammy award for her album, *Seesaw*, with nominations in 2014 and 2015 for Blues Music Awards, Beth Hart proved that she is a driving force in the world of Blues Rock. This multi-talented singer, songwriter, and musician (she plays piano, guitar, cello, bass guitar, and percussion), has a backstory that cries out the Blues. Having overcome addiction, alcohol abuse, and spent time in rehab and psychiatric hospitals, something for which she is openly forthcoming to her audiences, she is proud to be sober, grateful for the love of her husband and road manager Scott Guetzkow, and her family. On the night of the concert, her mother was in the audience, and her brother Mike was working the merch table. Exposing her vulnerability and openness, Beth Hart lets audiences into her private world, one which they clearly appreciate and stand by her.



Beth Hart

Beth played cuts off her latest album, *Fire On The Floor*, released in 2016, including *Love Is A Lie*, *Baby Shot Me Down*, *Good Day To Cry*, *Coca Cola*, *Let's Get Together*, and many more, which she interspersed with stories behind the inspiration of the songs and how she came to write them.



Bob Marinelli

Although this was our first time experiencing live performances by Rachael Sage and Beth Hart, they made their mark and we cannot wait to hear more good music from them. An evening that began with Rachel Sage's performance and culminated with Beth Hart's, these dynamic, inspired, and inspiring women of rock, clearly rocked The Ridgefield Playhouse, and for that we are most appreciative.



Beth Hart and the band

Keep enjoying the music!

A few of the many exciting upcoming programs at **The Ridgefield Playhouse** include:

Performances

Steven Seagal Blues Band

March 12, 2017

Jesus Christ Superstar - The Rock Opera

March 25, 2017

The Zombies

March 30, 2017

Peter Wolf & The Midnight Travelers

April 22, 2017

Buddy Guy

April 25, 2017

Barenaked Ladies

April 27, 2017

For information on upcoming programs and events, please visit the website, www.RidgefieldPlayhouse.org.

For tickets or information, please call **The Ridgefield Playhouse Box Office**: +1-203-438-5795.



The Ridgefield Playhouse

80 East Ridge Road

United States

Telephone: +1-203-438-5795

Fax: +1-203-438-4543

Website: www.RidgefieldPlayhouse.org

Facebook: www.Facebook.com/RidgefieldPlayhouse

Follow **The Ridgefield Playhouse** on **Facebook**: www.Facebook.com/RidgefieldPlayhouse

For information on **Beth Hart** and upcoming performances, please visit the website: www.BethHart.com

Follow **Beth Hart** on **Facebook**: www.Facebook.com/officialbethhart/

For information on **Rachael Sage** and upcoming performances in the United States and internationally, please visit the website: www.RachaelSage.com

Follow **Rachael Sage** on **Facebook**: www.Facebook.com/RachaelSage

Read our review of Rachael Sage - *Choreographic* in the **Music Scene** section.

Luxury Experience <http://luxuryexperience.com/>

Created by: Debra C. Argen and Edward F. Nesta

Follow **Luxury Experience** on **Facebook** at www.Facebook.com/LuxuryExperience to see photos and videos.

Follow **Luxury Experience** on **Twitter** at www.twitter.com/LuxuryPair

March 2017. **Luxury Experience**. www.LuxuryExperience.com. All rights reserved.