

Created by: Debra C. Argen and Edward F. Nesta

## Dana Fuchs at StageOne, Fairfield, Connecticut, USA



**Dana Fuchs**, the sultry siren of **Blues Rock** gave an outstanding performance at [Fairfield Theatre Company's StageOne](#) in **Fairfield, Connecticut**. Back in Connecticut for a 2-night gig at StageOne before heading back out on the road on her European tour, Dana Fuchs played to sold-out shows.

On Saturday, September 20, 2014, we took our friends, Gilberto Sacilotti, Jr. and Regina Sacilotti who were visiting us from Brazil, to see Dana Fuchs perform at StageOne. Friends of Debra since they were teens and she was living in Brazil, throughout the years we have shared many happy hours together at concerts and listening to music. Having similar tastes in music, we have introduced each other to many bands and artists, and knew that they would love to see Dana Fuchs perform at the intimate Fairfield Theatre's StageOne.



**Dana Fuchs - Rocking On**

Dana is easily this generation's "Queen of Blues Rock," she is a sultry-voiced siren who continues to deliver the goods with each performance making her an audience favorite. Having been fans ever since we first heard and reviewed Dana's release in 2011, [Dana Fuchs - Love To Beg](#) released on the [Ruf Records](#) label (read the review in the [Music Scene](#) section) we quickly learned that she is someone who first captures the ear with her voice, and then steals the heart with her generosity as a performer.



### Dana Fuchs

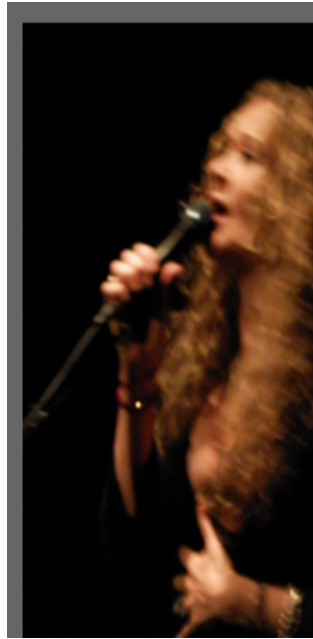
In addition to her impressive talent as a vocalist and guitarist, Dana also co-writes her own music with long-time writing partner, Jon Diamond, with Dana writing the lyrics and Jon providing the accompanying music, since she was 19 years old. Their music meshes the way a well-made glove fits a hand, and the result in a word, is spectacular.

On the night of Saturday, September 20, 2014, she opened the show with the song, *Almost Home*, a cut off her **Dana Fuchs - Live in NYC** release, which she described as written when the United States went into Iraq, and now war is going on all the time, and invited the audience to make this our home tonight, Connecticut.



### Dana Fuchs and the Dana Fuchs Band

Next, came cuts off her latest release, [Bliss Avenue](#) released on the [Ruf Records](#) label (read the review in the [Music Scene](#) section) including the title track, *Bliss Avenue*, *Handful Too Many*, *Livin' On Sunday*, *So Hard To Move*, *Nothin' On My Mind* which has a definite Country vibe, *How Did Things Get This Way*, and one of our all-time favorites, *Long Long Game*.



***Dana Fuchs Performing at StageOne Fairfield, CT***

Dana told the audience that she wrote the song, *So Hard To Move* about the unexpected illness and death of her brother, and after losing a sister (her sister Donna), a brother, and her father who died in July 2014, she learned that we need to remind ourselves to celebrate life, right here and now.

Throughout the evening, she interspersed cuts off her ***Dana Fuchs - Love To Beg*** release, which included *Summersong*, *Set It On Fire*, *Keepsake*, a ballad which slowed down the pace, and the title track, *Love To Beg*.

She also performed the stunning cover of *I'd Rather Go Blind* recorded by Etta James in 1967, which was a gorgeous tribute with Dana's impressive vocal range and some dynamite guitar work by Jon Diamond that really showcased his extraordinary talent as a guitarist.

After the performance, we asked Gilberto and Regina what they thought of Dana's concert and without a second of hesitation, Gilberto quickly replied, "Fantastic!" Indeed it was, as Dana always delivers with outstanding performances followed by taking time to meet with fans after shows.



**Edward, Debra, Gilberto, Dana Fuchs, and Regina**

"The Fairfield Theatre Company is a nonprofit center for the arts and culture located in the heart of

Created by: Debra C. Argen and Edward F. Nesta

downtown Fairfield, Connecticut. We bring together a community of musicians, actors, artists, writers, fans, and supporters who are dedicated to the simple premise that the broadest spectrum of live entertainment and cultural exchange is essential to the vitality of our society."

Fairfield Theater Company has three venues in Connecticut that attract top talent, StageOne in Fairfield (225-seat venue), The Klein in Bridgeport (1,400-seat proscenium theater), and the Norwalk Concert Hall in Norwalk (1,036-seat venue).

"Established in 2004, StageOne is a 225-seat venue in the heart of downtown Fairfield, Connecticut. Originally built primarily for theatre productions, StageOne is consistently voted as the best place to hear live music in the entire region because of the quality of the sound, the intimacy of the space, and the caliber of the artists. There is literally not a bad seat in the house and there are few venues in the country where the fans can be so close to the world-renowned artists who grace the stage in over 200 concerts and productions a year. The artists love to perform here and frequently cite StageOne as their absolute favorite venue. This brings out the very best in them, which is reflected in the quality of their performances and enjoyment of their fans."

StageOne is conveniently located directly across from the Fairfield Train Station making it easily accessible by car or by train via [Metro North](#). By car, it is a 30-minute drive from Greenwich and New Haven, a 60-minute drive from Hartford, and a 90-minute drive from New York City.

Please visit the website, [www.FairfieldTheatre.org](http://www.FairfieldTheatre.org) for program information on upcoming performances at all three of their venues. For tickets or information, please call: +1-203-259-1036.

**A few of the many upcoming shows at StageOne in Fairfield:**

10/19/2014

An Evening with John Sebastian and David Grisman

10/22/2014

Al Stewart

10/29/2014

Trevor Hall

11/4 - 5/2014

Average White Band

11/15/2014

Declan O'Rourke

11/20-21/2014

Ryan Montbleau

12/6/2014

Melanie

**A few of the upcoming shows at The Klein in Bridgeport:**

10/12/2014

Ziggy Marley

11/1/2014

The FabFaux

**A few of the upcoming shows at Norwalk Concert Hall:**

11/15/2014

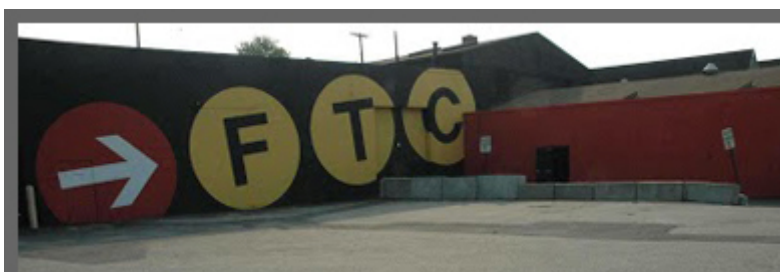
Don McLean

11/21/2014

Ani DiFranco

1/8/2015

Dave Mason's Traffic Jam



**StageOne**

**Fairfield Theatre Company**

**70 Sanford Street(across from the Fairfield Train Station)**

**Fairfield, CT 06824**

**Box Office: +1-203-259-1036**

**Email:[info@fairfieldtheatre.org](mailto:info@fairfieldtheatre.org)**

**Website:[www.FairfieldTheatre.org](http://www.FairfieldTheatre.org)**

**Facebook:[www.Facebook.com/FairfieldTheatreCompany](http://www.Facebook.com/FairfieldTheatreCompany)**

For information on upcoming **Dana Fuchs** performances in Europe and in the United States, please visit the website: [www.DanaFuchs.com](http://www.DanaFuchs.com)

Listen to sample cuts off Dana Fuch's releases: [www.DanaFuchs.com/DFBmusic](http://www.DanaFuchs.com/DFBmusic)

Follow **Dana Fuchs** on Facebook at [www.Facebook.com/DanaFuchs](http://www.Facebook.com/DanaFuchs)

Follow **Fairfield Theatre Company** on Facebook: [www.Facebook.com/FairfieldTheatreCompany](http://www.Facebook.com/FairfieldTheatreCompany)

Follow **Luxury Experience** on Facebook: [www.Facebook.com/LuxuryExperience](http://www.Facebook.com/LuxuryExperience)

© October 2014. Luxury Experience [www.LuxuryExperience.com](http://www.LuxuryExperience.com) All Rights Reserved.