

## Mara Hoffman Spring Summer 2014 Collection

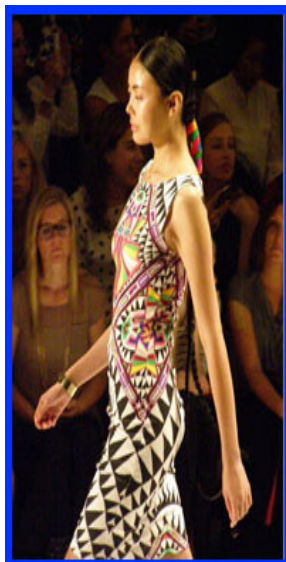
**Designer Mara Hoffman** makes a bold and colorful statement with her Spring Summer 2014 Women's Collection. Eye-catching color and intricate patterns, beading, and cutouts are the hallmark of the 32-look collection seen at **Mercedes-Benz Fashion Week** at **Lincoln Center in New York**. **Luxury Experience** brings you a few of the highlights of the collection we experienced during the show.

After graduating from Parsons School of Design in New York City and studying at Central Saint Martins College of Arts and Design in London, Designer Mara Hoffman launched her brand in 2000. Her focus is on ready-to-wear and swimwear and for Spring Summer 2014 she continues her use of color and signature prints to maximum effect.



**Designer - Mara Hoffman**

She draws "inspiration from color, light, and happiness, the collection looks at different cultures and cosmic spaces through a prism of color. Both classic and new shapes are brought to life with vibrant color palettes in chiffons, CDC's and cottons, pushing this season to be one of the brightest and boldest yet. Motifs found throughout the collection include serpents, representative of transition and evolution as well as eyes found in the Iris print group to symbolize transcendent vision. Through the collection, Hoffman embraces the rainbow for its positivity, diversity, and ultimately, for serving as a symbol of light, love, and manifestation."

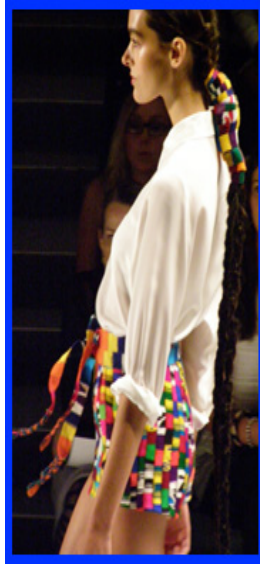


**Design by Mara Hoffman**

The Spring Summer 2014 collection features bustiers, bomber jackets, dashikis, pants, skirts, shorts, jumpsuits, swimwear, kaftans, dresses, and gowns. She uses a color palette of royal and cobalt blues, navy, lilac, lemon, magenta, turquoise, coral, tangerine, and neutrals of ivory, white, and black.

Two examples from the collection include her high-waist colorfully patterned **Guatemalan belt shorts** paired with a **long sleeve ivory CDC button down shirt**; and a **white CDC sleeveless jacket** paired with **cobalt blue CDC slouch pants**.





**Designs by Mara Hoffman**

Mara shows her depth of color layering and patterns with her sexy and flirty **iris magenta CDC cutout dress**; her **sunrise intarsia pullover with tie die peasant skirt**; and her **beaded rainbow open back gown** with lilac skirt.





**Designs by Mara Hoffman**

As always, remember, that when it comes to fashion, it is not only about what you wear, it is also, how you wear it! Know your own style and have a fashionable season!

**Mercedes-Benz Fashion Week** and **Mercedes-Benz Fashion Week International** shows website: [www.MBFashionWeek.com](http://www.MBFashionWeek.com).

Follow **Mercedes-Benz Fashion Week** on **Facebook** at [www.Facebook.com/MBFashionWeek](http://www.Facebook.com/MBFashionWeek).

Follow **Mara Hoffman** on **Facebook** at [www.Facebook.com/OfficialMaraHoffman](http://www.Facebook.com/OfficialMaraHoffman)

Follow **Luxury Experience** on **Facebook** at [www.Facebook.com/LuxuryExperience](http://www.Facebook.com/LuxuryExperience).

© January 2014. Luxury Experience. [www.LuxuryExperience.com](http://www.LuxuryExperience.com) All rights reserved.