

Pamella Roland Spring 2013 Collection

Designer Pamella Roland presented her stunning **2013 Spring 2013 Collection** of 50 looks at **Avery Fisher Hall at Lincoln Center** in **New York**, during **Mercedes-Benz Fashion Week**. Look for cool neutrals of camel, ivory, blush, taupe, grey, black, and primary colors of cobalt blue and yellow. The collection of coats, dresses, jumpsuits, shorts, pencil skirts, jackets, slim and wide-leg pants, and gowns, feature peplums, one-shoulder, and strapless looks that have classic, yet modern appeal.

Since launching her brand in 2002, Pamella continues to attract women of style, has become one of the leading eveningwear resources, and was inducted into the Council of Fashion Designers of America in 2010. "As an avid art collector and enthusiast, Pamella drew inspiration (for Spring 2013) from the iconic American artist Ellsworth Kelly and the clean almost severe lines depicted in his paintings that speak to a harmony between the shapes they create."



Designer Pamella Roland

The collection features sensuous fabrics of silk chiffon, silk faille, silk shantung, and silk georgette. Peplums figure prominently in the collection as seen in a jumpsuit, on dresses, tops, pants, jackets, and gowns. Maco beading, sequins, color blocking, jewel buttons, and creative cutouts peak interest in the collection.

There were many gown highlights, including an ultra-feminine Black/Ivory/Grey/Yellow Printed Silk Chiffon Pleated Halter Gown with Black Maco Beaded Collar, and a dramatic Ivory/Taupe Silk Georgette Cutout Gown with Black Maco Beaded Waist.



Spring 2013 Designs by Pamella Roland

Other gown highlights included a Black/Ivory Printed Silk Chiffon One-Shoulder Gown; a Blush Silk Georgette Peplum Halter Gown with Maco Beaded Bust; and a sleek and sexy, Black/Ivory Sequin Color Blocked Gown with Low Back. Gowns with trains included an Ivory Silk Georgette Gown with Combo Crinoline/Grosgrain and Full Train; and a Black Silk Georgette Gown with Silk/Cotton Fils-Coupe Peplum and Train.

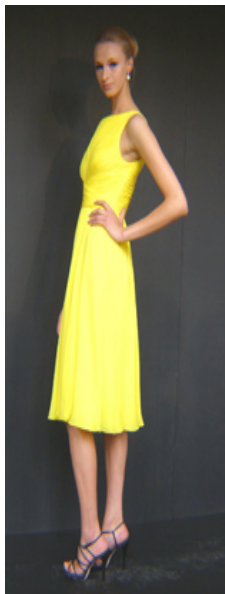




Spring 2013 Designs by Pamella Roland

Skirt and dress highlights included a Yellow Silk Chiffon Dress with Keyhole Front that had crisscross rouching at the waist that fell below the knee; a Black Silk Georgette Peplum Dress with Combo Crinoline/Grosgrain; and an elegant Black Cloque Jacquard Top with Short Sleeves, Low Back and Jewel Buttons paired with a Black Cloque Jacquard Party Skirt, worn with three-quarter length black gloves.





Spring 2013 Designs by Pamella Roland

As always, remember, that when it comes to fashion, it is not only about what you wear, it is also, how you wear it! Know your own style and have a fashionable season!

Mercedes-Benz Fashion Week and **Mercedes-Benz Fashion Week International** shows website: www.MBFashionWeek.com.

Follow **Mercedes-Benz Fashion Week** on **Facebook** at www.Facebook.com/MBFashionWeek.

Follow **Pamella Roland** on **Facebook** at www.Facebook.com/PamellaRoland.

Follow **Luxury Experience** on **Facebook** at www.Facebook.com/LuxuryExperience.

© February 2013. Luxury Experience. www.LuxuryExperience.com All rights reserved.