

Pamella Roland and Carlos Miele - Eveningwear - Spring 2012

Sultry **Spring 2012 Women's Eveningwear** from [Designer Pamella Roland](#) and [Designer Carlos Miele](#) as seen during [Mercedes-Benz Fashion Week](#) at **Lincoln Center** in **New York**. Feminine, contemporary styling, fluid fabrics, rich colors, and lush details are the hallmarks from the two design houses that keep setting the pace for eveningwear.

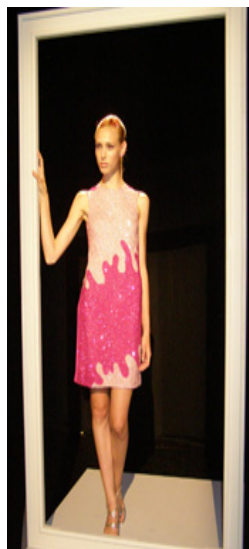
For Spring 2012 [Designer Pamella Roland](#) "drew inspiration from American Abstract Expressionist painters such as Robert Motherwell and Helen Frankenthaler. Their artwork created a new visual language on canvas and played a significant role in laying the foundation for the new movement of Abstract Expressionism in New York during the 1940s."



**Designer Pamella Roland with Models and Guest
at MBFW Fall 2011**

Pamella Roland launched her brand in 2002, and her designs are a continual "red carpet" favorite. Her 30-look collection for Spring 2012 is stunning with ostrich feathers, beading, hand-pleating, and embroidery adding interest to the silhouette styles. Asymmetrical, one-shoulder and one-sleeve designs are interspersed with strapless and v-neck looks.

She presented an interesting dual version with her short cocktail dress, a **Fuchsia Multicolor Beaded Front Dress** with abstract beaded design in fuchsia and white, and its long counterpart, a **Black/Canvas Fully Beaded Strapless Gown** with abstract design along the side and slight trailing train.



Designs by Pamella Roland

A few of the other gown highlights included a **Sterling Blue Bias Strip Chiffon Embroidered One-Sleeve Gown with Antique Gold Brushed Detail**; a figure hugging **Pale Navy Fully Beaded V-neck Gown with Bias Chiffon Detail** and cap sleeves and a small trailing train; a **Lavender Silk Crepe Back Satin Gown with Sequin Embroidery and Piping Detail**; and an **Ivory Silk Faille Halter Top with Tie Neck** paired with an **Ivory Silk Faille Ball Skirt with Layered Bow Back Detail**.

Created by: Debra C. Argen and Edward F. Nesta





Designs by Pamella Roland

Brazilian [Designer Carlos Miele](#) describes his Spring Summer 2012 Collection, "Immersive Landscape, born from the idea of immersive artificial environments, which can be created by virtual reality. In a perfect imaginary world, there is perpetual sun - it is all full of vivid colors in bright chemical tones.

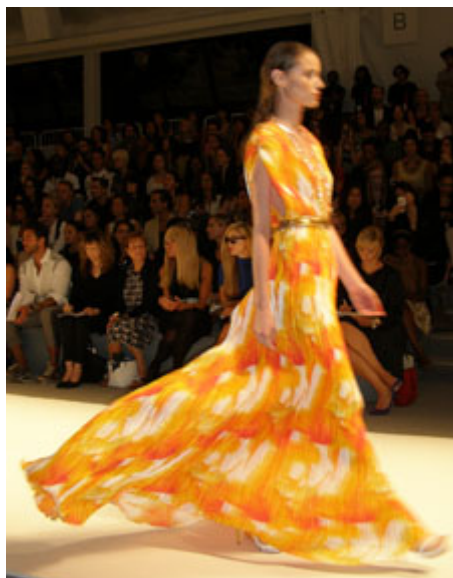


Designer Carlos Miele

I seek a dialogue between artificial and natural, modified beauty and organic, technology and life. For this season's collection, I created an artificial paradise, filled with fluid lines, sleek sculptural forms and vibrant digital prints. In this artificial and perfect environment, under a perpetual sun, women from different ethnicities form a global community where there are no racial boundaries."

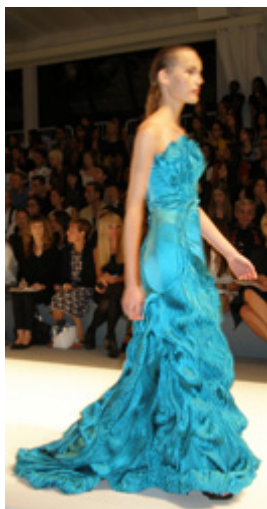
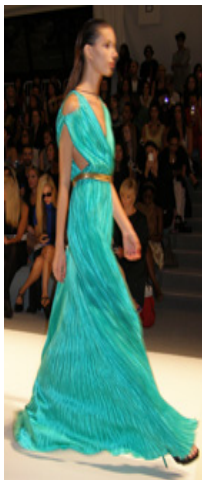
For Spring and Summer 2012 his 29-look collection features prints on silk charmeuse, fluid fabrics that elegantly flow, and touches of gold to accent colors of the sea intermixed with oyster, white, coral, and green; spring and summer definitely sizzles in the adept hands of Carlos Miele.

A few of the highlights on the runway at Mercedes-Benz Fashion Week in New York included his one-shoulder **White Shell Silk Charmeuse Long Dress with Embroidery Detail and Gold Mesh Metal Belt**; **Goldfish Print Silk Charmeuse Long Dress with Gold Mesh Metal Belt**; and **Oyster Print Silk Charmeuse Long Dress with Fuxico Appliqué**.



Designs by Carlos Miele

Bold and vibrant describes his **Vivid Blue Silk Charmeuse Long Dress**; **Vivid Green Silk Charmeuse Long Dress with Gold Metal Mesh Belt** open shoulders and deep plunging neckline; and his **Vivid Blue Silk Taffeta Long Dress with Light Blue Silk Faille Detail**.



Designs by Carlos Miele

As always, remember, that when it comes to fashion, it is not only about what you wear, it is also, how you wear it! Know your own style and have a fashionable season!

For information on **Mercedes-Benz Fashion Week in New York** or other **Mercedes-Benz Fashion Week International** shows, please visit the **Mercedes-Benz Fashion Week** website: www.MBFashionWeek.com.

© January 2012. Luxury Experience. www.LuxuryExperience.com All rights reserved.