

## Exciting Women's Fall 2010 Fashions from Adam and Twinkle by Wenlan

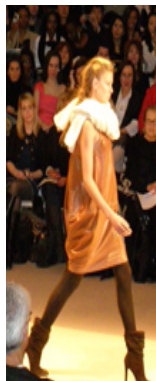
Ladies, sit back and relax as [Luxury Experience](#) brings you a preview of exciting **Women's Fall 2010 Fashions** from the **designers Adam Lippes** for [Adam](#) and **Wenlan Chia** for [Twinkle by Wenlan](#) as seen on the runways during [Mercedes-Benz Fashion Week](#) in **New York**.



**Designer Adam Lippes** for the [Adam](#) line showed an impressive collection of 36 looks for fall 2010. His inspiration for the collection came from a "painting by Isca Greenfield-Sanders, from her show "Against The Fall," a play in words 'para' or against, and 'chute' the French word for fall, this work was of a parachute jumper, floating downward through dark yet opaque panels in shades of black. Her experimentation with color, texture, lightness and line inspired the beginning of this fall 2010 collection."

His color palette for fall is a series of neutrals consisting of caramel, ivory, ochre, steel, silver grey, charcoal, black, putty, mocha, khaki, olive green, and forest green, enlivened with bits of rust and crimson. Fabrics are sensual, silk chiffon, silk charmeuse, cashmere, merino wool, lambswool, agora, mohair, shearling, coyote, and leather.

Dress highlights from the show included a **Crimson Silk Chiffon Hand Painted Kaleidoscope Print Tank Dress** that reminded us of a beautiful monarch butterfly or an exotic flamenco dancer; a **Black Silk Chiffon Strapless Dress with Cloud Embroidery**; a **Multi-Color Wool Kaleidoscope Jacquard Knit Dress** with black cowl collar, cap sleeves trimmed with black, and belted detail at the waist was another smart and wearable look; and an **Ivory Etched Plaid Silk Chiffon Strapless dress** with Empire belt.



**Designs by Adam Lippes for Adam**

Skirt highlights included a **Black Pointe Double Label Blazer** paired with a **Black Fine Gauge Viscose Crewneck Zipper Back Tee** and **Seamed Shearling Circle Skirt** with black leather piping at the waist and hem was a smart and sexy look for cooler weather; and a **MochaLambswoland Angora Birdseye Short Suit with Double Lapel Jacket** paired with a **Putty Washed Silk Charmeuse Tank**.





**Designs by Adam Lippes for Adam**

Bundle up baby, its cold outside; face the weather in elegant style with Adam's above the knee **Ivory Wool and Cashmere Convertible Coat** with exotic elbow to wrist **Mongolian Lamb Cuffs**; or perhaps his **Charcoal Etched Peacoat with Shearling Trim**, paired with **Ink Washed Silk Charmeuse Tank** and **Silver Grey Lambswool and Angora Birdseye Pant**.



**Designs by Adam Lippes for Adam**

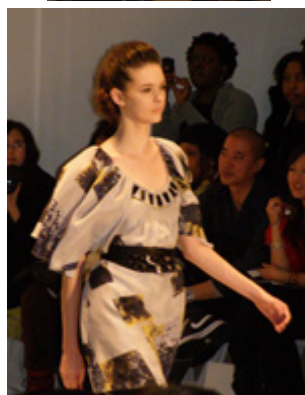
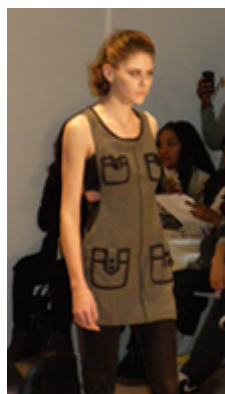
Celebrity sightings at the Adam show included actress **Erin Lucas** and socialite **Tinsley Mortimer**.



**Designer Wenlan Chia** for [Twinkle by Wenlan](#) showed an impressive collection of 47 looks for her Fall 2010 Collection "that is playfully gothic, a contradiction in chunk and theatrically understated."

Look for short hemlines, skinny pants, chunky knits, animal inspired prints, funky jewelry accessories, and a dark neutral and earthy color palette. Studs and embellishments add to the overall contemporary look of the collection.

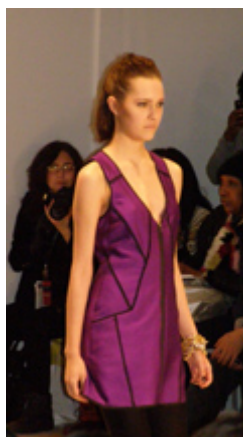
A few of the many show highlights included a playfully sophisticated **Houndstooth Sleeveless Dress with Side Cut Out Detail in black with four front pockets in black and grey** accessorized with a **Cap Cube Bracelet**; a **Mystic Sleeveless Dress with Shoulder Tie in black multi** paired with an **African Queen Necklace** and **Bull Dog Leash Bracelet**; and a **Mystic Flutter Sleeve Dress with Embellished Neckline and Chain Belt** in mauve multi.





**Designs by Wenlan Chia for Twinkle**

One-shoulder looks included a **Birch Feather One Shoulder Dress with Tie in Berry**, which had one long flirty sleeve paired with a **Mad Max Bracelet**; and a **Nocturne One Shoulder Ruffles Layered Dress in Purple/Black** paired with a **Mad Max Bracelet**.



**Designs by Wenlan Chia for Twinkle**

Other highlights included a **Chunky Knit Sweater Dress with Oversized Collar and Chain Belt** in twilight; and a silver grey **Lady Bovary Coat with Wide Lapels** paired with black **Nostalgia Skinny Pant**.



**Designs by Wenlan Chia for Twinkle**

**Boldface** names spotted at the **Twinkle by Wenlan** show included actress **Erin Lucas** and violinist **Miri Ben-Ari**.

As always, remember, that when it comes to fashion, it is not only about what you wear, it is also, how you wear it! Know your own style and have a fashionable season!

For information on **Mercedes-Benz Fashion Week in New York** or other **Mercedes-Benz Fashion Week International** shows, please visit the Mercedes-Benz Fashion Week website: [www.MBFashionWeek.com](http://www.MBFashionWeek.com).

© July 2010. Luxury Experience. [www.LuxuryExperience.com](http://www.LuxuryExperience.com). All rights reserved.