

Created by: Debra C. Argen

Perry Ellis for Evening - The Fall 2010 Collection

Creative Director, Designer John Crocco for [Perry Ellis](#) took a romantic yet contemporary approach with his 42-look collection for **Fall 2010** shown at [Mercedes-Benz Fashion Week](#) in **New York**.

After not showing for the past few seasons, it was nice to see **Designer John Crocco** bring back the **Perry Ellis** collection to [Mercedes-Benz Fashion Week](#) in February 2010.

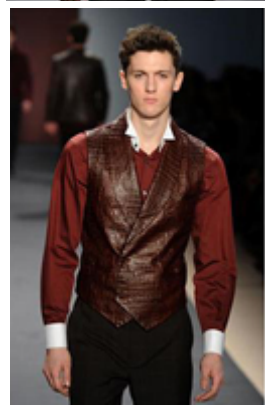
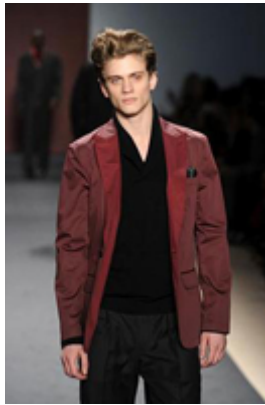


Perry Ellis Fall 2010 Fashion

His Fall 2010 collection came across as very fresh, contemporary, yet with classic appeal. There were many highlights in the collection of velvet evening jackets including that included a midnight **Paisley Velvet Evening Jacket** paired with an eclipseCotton Shawl Collar Pullover and black Resin Coated Slim Jean;

Created by: Debra C. Argen

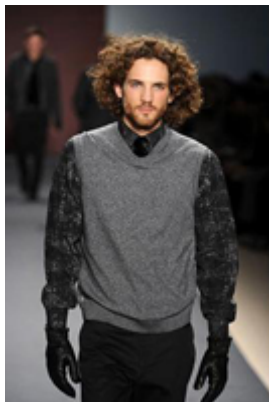
eclipse **Printed Velvet Shawl Collar Evening Jacket** paired with a majolica blue Floral Print Silk Bib Front and Cotton Sateen Tuxedo Pant; and black **Pieced Velvet Evening Jacket** paired with a charcoal Cotton Plaited Colorblock Crew and Denim Evening Pant.



Perry Ellis Fall 2010 Fashion

Other evening jackets in the collection included a majolica blue **Wool Double Collar Tuxedo Jacket** paired with an eclipse heather Cotton Tipped Long Cardigan, white Paisley Jacquard Tuxedo Shirt, and Denim Evening Pant; **Denim Peak Lapel Dinner Jacket** paired with a black Cotton Dobby Evening Shirt and black Wool Windowpane Trouser; port royale **Cotton Sateen Peak Lapel Dinner Jacket** paired with a black Cotton Shawl Collar Pullover and black Wool Blend Pinstripe Pleated Pant; and **Goat Skin Shawl Collar Dinner Jacket** in dark chocolate paired with a Cotton Tipped Long Cardigan and black Denim Evening Pant.

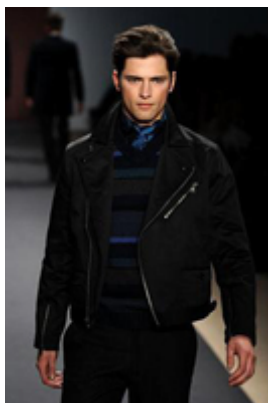
Created by: Debra C. Argen



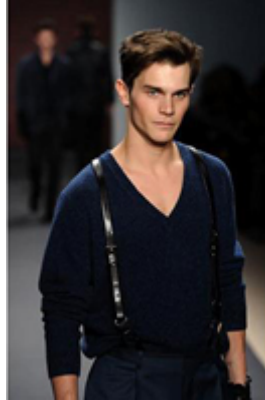
Perry Ellis Fall 2010 Fashion

Highlights from the Perry Ellis Fall 2010 suit collection included a charcoal heather **Wool Blend Sateen Stripe 3-Piece Suit** paired with a port royale Sateen Dobby Shirt; black **Wool Jacquard Double-Breasted Evening Suit** paired with a black Honeycomb Printed Silk Shirt; and an ensign blue **Wool Jacquard Evening Suit** paired with an ensign blue Honeycomb Print Silk Shirt.

John Crocco also showed a collection of coats and jackets consisting of Trench, Peacoat, Track, and Carcoat styles, along with a selection of sweaters. Gentlemen, get ready for Fall 2010.



Created by: Debra C. Argen



Perry Ellis 2010 Fashion

As always, remember, that when it comes to fashion, it is not only about what you wear, it is also how you wear it! Know your own style and have a fashionable season!

For information on Mercedes-Benz Fashion Week in New York or other Mercedes-Benz Fashion Week International shows, please visit the Mercedes-Benz Fashion Week website at:

www.MBFashionWeek.com.

© April 2010. Luxury Experience. www.LuxuryExperience.com All rights reserved.